



Electrolux

ELECTROLUX HOME PRODUCTS PTY LTD

ABN 51 004 762 341

Technical Publication N° RH104

Issue: 3

Date: 3/15

WESTINGHOUSE

CANOPY RANGEHOODS

MODELS:

WRC613S

PNC 942001183

WRC913S

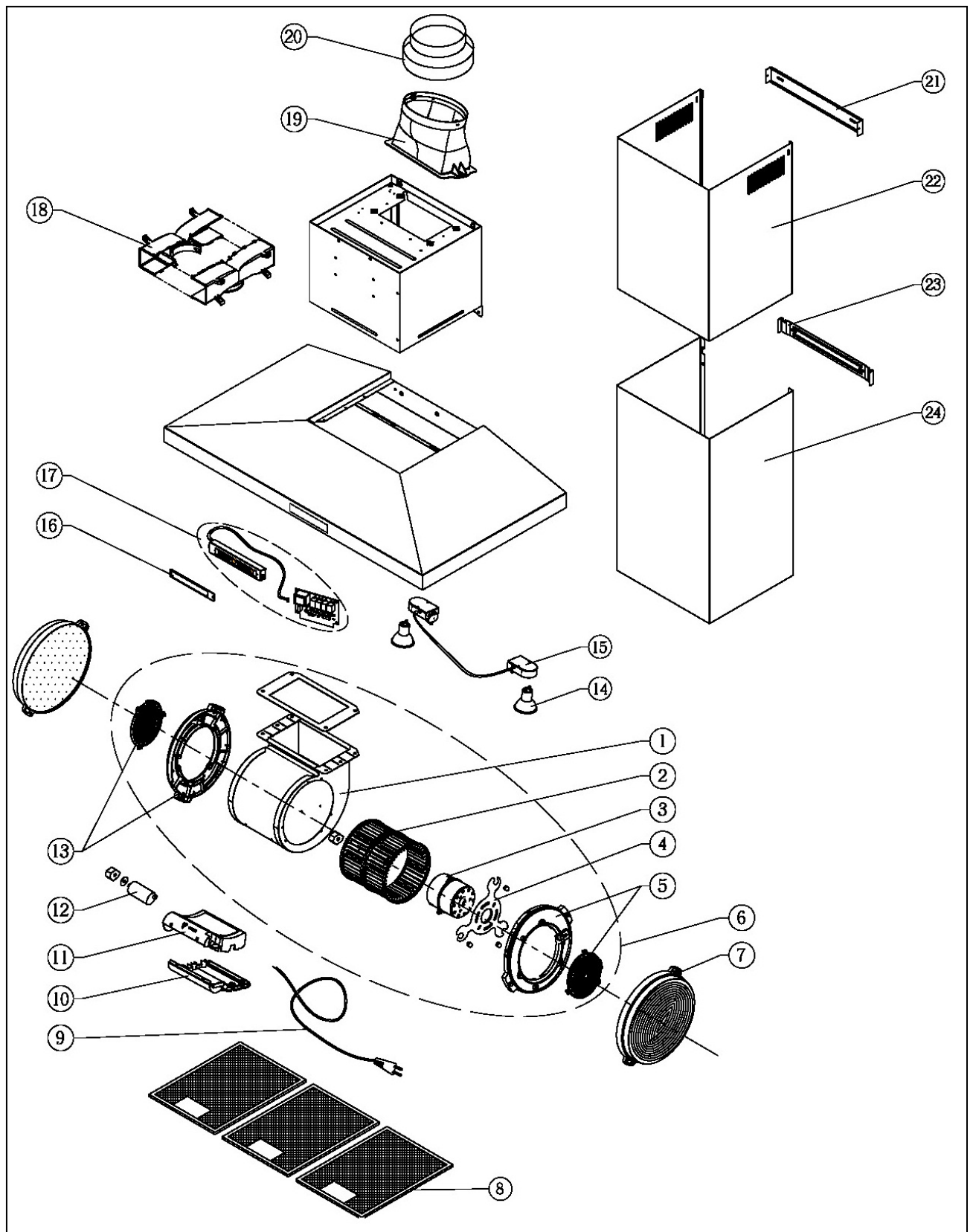
PNC 942001184

First Built Dates:	
WRC613S	6-13
WRC913S	6-13

CONTENTS	PAGE N°
FIRST BUILT DATES	2
CONTENTS	3
HOOD ASSEMBLY	4 - 5
CIRCUIT DIAGRAM	

NOTE: In Parts Listings

N.I. = Not Illustrated
N.P.A. = No Part Available
N.P.N. = Not Used on this Model



ITEM	PART N°	DESCRIPTION	60cm	90cm
1	N.P.A.	MOTOR GROUP CASING-HOOD-K (PT OF ITEM 6)	1	1
2	E607075	TURBINE-HOOD-K (PT OF ITEM 6)	1	1
3	E649060	TAN MOTOR 220-240V 50HZ 330W (PT OF ITEM 6)	1	1
4	E629040	MOTOR MOUNTING BRACKET-TA MOTOR (PT OF ITEM 6)	1	1
5	E607165	BETA INLET RING WITH GRILLE (RIGHT) (PT OF ITEM 6)	1	1
6	E260050	TAN 220-240V/330W MOTOR GROUP (INC ITEMS 13, 5, 4, 3, 2 & 1)	1	1
7	AR610CF	FILTER CARBON	2	2
8	E653010	K METAL FILTER NEUTRAL CLIP	2	3
9	E601025	POWER CORD SAA (AUS)-HOOD-S FOR EHP	1	1
10	E639030	CONNECTION BOX COVER (SPLIT VERSION) (INC ITEM 11)	1	1
11		CONNECTION BOX (SPLIT VERSION) (PT OF ITEM 10)	1	1
12	E621025	CAPACITOR 6.5UF 450V	1	1
13	E607170	BETA INLET RING WITH GRILLE (LEFT) (PT OF ITEM 6)	1	1
14	69400980	LED LAMP-LORITRONIC TLT-GU10-5W	2	2
15	E251035	LAMPHOLDER ASSEMBLY 2 GU10 LAMP-HOOD-MIRAGE 900	1	1
16	60704290	CONTROL PANEL FOR TC SWITCH WITH ELUX SILKSCREEN- HOOD-CYLINDAR TC	1	1
17	63900780	SWITCH GROUP WITH NEW CONTROL BOX- HOOD(RED&WHITE LED)-HOOD-CYLINDAR TC	1	1
18	AR610RK	C RECIRCULATING KIT	1	1
19	E607130	150 IMPROVED OUTLET BASE	1	1
20	E607210	150 TO 120 OULET ADAPTER	1	1
21	E629095	UPPER CONDUIT FIXING PLATE-HOOD-ALFA	1	1
22	E629105	S.STEEL UPPER TUBE 450MM-HOOD-ALFA	1	1
23	E629100	LOWER CONDUIT FIXING PLATE-HOOD-ALFA	1	1
24	E629110	S.STEEL LOWER TUBE-HOOD-ALFA	1	1
N.I.	AR610FS	COVER FLUE EXTENSION ST/ST 1200MM	x	x

WARNING

IT IS ILLEGAL FOR PERSONS OTHER THAN LICENSED ELECTRICAL MECHANICS OR PERSONS AUTHORISED BY LEGISLATION TO WORK ON THE FIXED WIRING OF ANY ELECTRICAL INSTALLATION. PENALTIES FOR CONVICTION ARE SEVERE.

IMPORTANT SAFETY NOTICE

This diagram has been prepared for use by electrically qualified service technicians. Electrolux cannot be held responsible for the interpretation of its service publications nor for any injury or damage that may occur in connection with their use.

MODELS: WRC613S
PNC: 942001183

WRC913S
942001184

CIRCUIT DIAGRAM

