

Electrolux

ELECTROLUX HOME PRODUCTS PTY LTD

ABN 51 004 762 341

Technical Publication N° CG1102

Issue: 1

Date: 10/18

SIMPSON

GAS COOKTOPS

MODEL

SHG646SB

PNC

94325401605

Maintenance Level Change Summary

05	Gas valves and ignition switch harness
-----------	--

First Built Dates

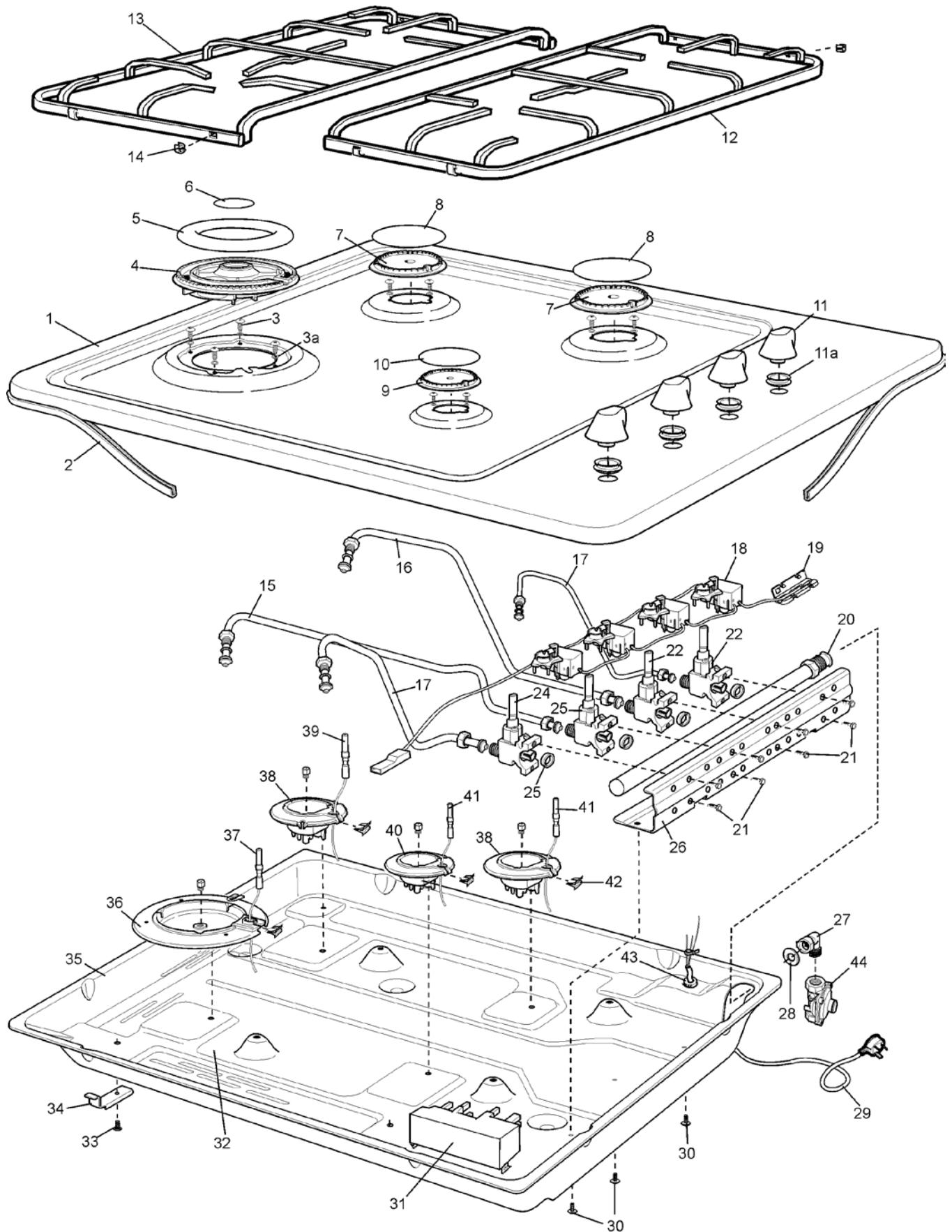
SHG646SB	11/18
-----------------	--------------

Contents

First Built Dates.....	2
Contents.....	3
COOKTOP ASSEMBLY	4
Gas Conversion – Important	Error! Bookmark not defined.

NOTE: In Parts Listings

N.I.	=	Not Illustrated
N.P.A.	=	No Part Available
N.P.N.	=	Not Used on this Model



ITEM	PART N°	DESCRIPTION EX 8296	QTY
1	A04657516	HOB 600 TOP PLATE S/S SCREENED	1
2	305 5221 00	SEAL SURROUND 2320MM	1
3	354 3203 01	SCREW 2.9 X 13 PAN T10 ZP	8
4	357725915	TRIPLE CROWN WOK BNR CYL MACH	1
5	389051402	BURNER CAP GLOS ENAM WOK OUTER	1
6	389051302	BURNER CAP GLOS ENAM WOK INNER	1
7	354013707	BURNER SEMIRAPID BUNER	2
8	354013905	BURNER CAP ENAM SEMI-R CYLIND	2
9	354013802	BURNER CROWN AUX CYLINDER	1
10	354013906	BURNER CAP ENAM AUX CYLINDER	1
11	A02633010	KNOB SILVER	4
11a	A06467501	GROMMET	4
12	A03948802	TRIVET WIRE STD/WOK CHEF MATT	1
13	A03776202	TRIVET WIRE STD/STD CHEF MATT	1
14	305435300	FOOT TRIVET	8
15	A13948401	TUBE BURN ELUX SQR C/TOP LF	1
16	A13929001	TUBE BURN ELUX SQR C/TOP LR	1
17	A13928801	TUBE BURN ELUX SQR RF/RR	2
18	A11892006	SWITCH HARNESS	1
19	N.P.A.	COFFIN INSULATOR 140C NYLON	2
20	0011 002 588	RAIL GAS COOKTOP 4 HOLE CORAL	1
21	305 5175 00	SCREW M4 X 15 HEX ZC	8
22	A05396318	COPRECI SGL VALVE SEMI RAP BL	2
23	A05396320	COPRECI SGL VALVE WOK BK	1
24	A05396317	COPRECI SGL VALVE AUX GN	1
25	356525102	GASKET VALVE COPRECI	4
26	305489101	BRACKET GAS RAIL 600/900 WELD	1
27	A06178801	FITTING GAS INLET TAPERED BSPT	1
28	0115 009 011	WASHER SEALING	1
29	A06100501	CABLE - ELECT SUPPLY (10 A)	1
30	305338604	SCREW M3.5X6	3
31	A06748401	IGN BOX 4PT	1
32	305 3096 05	SCREW PAN HEAD M4 X 8	4
33	305 3761 02	SCREW 3/4X8 PAN Z/P (LP HP AER	4
34	A00561202	CLAMP BURNER BOX CORAL/GAIL HZ	4
35	N.P.A.	BURNER BOX CORAL WASHED HZ	1
36	A04856505	BURNER BODY ASSY WOK IGN NG	1
37	A01329105	PLUG SPARK WOK 500MM ENAMELLED	1
38	A04856301	BURNER BODY ASSY S/RAP IGN NG	2
39	A01330609	PLUG SPARK 600 MM ENAMELLED	1
40	A04856101	BURNER BODY ASSY AUX IGN NG	1
41	A01330606	PLUG SPARK 400 MM ENAMELLED	2
42	A03381701	SPRING ELECTRODE	4
43	305 5322 00	GROMMET CORD GRIP MP6N4	1
44	A00338701	REGULATOR GAS NG INTEG TEST PT	1
N.I.	305597600	THERMOCOUPLE 275MM	2
N.I.	305597601	THERMOCOUPLE 500MM	1
N.I.	305597700	THERMOCOUPLE 500MM WOK	1

LPG CONVERSION

This appliance is supplied set up for Natural Gas usage. A conversion kit is included with the product for Universal LPG usage. The conversion kit contains the appropriate injectors and 1 LPG sticker.

Please follow the procedure below if a conversion to suit UNIVERSAL LPG is required:

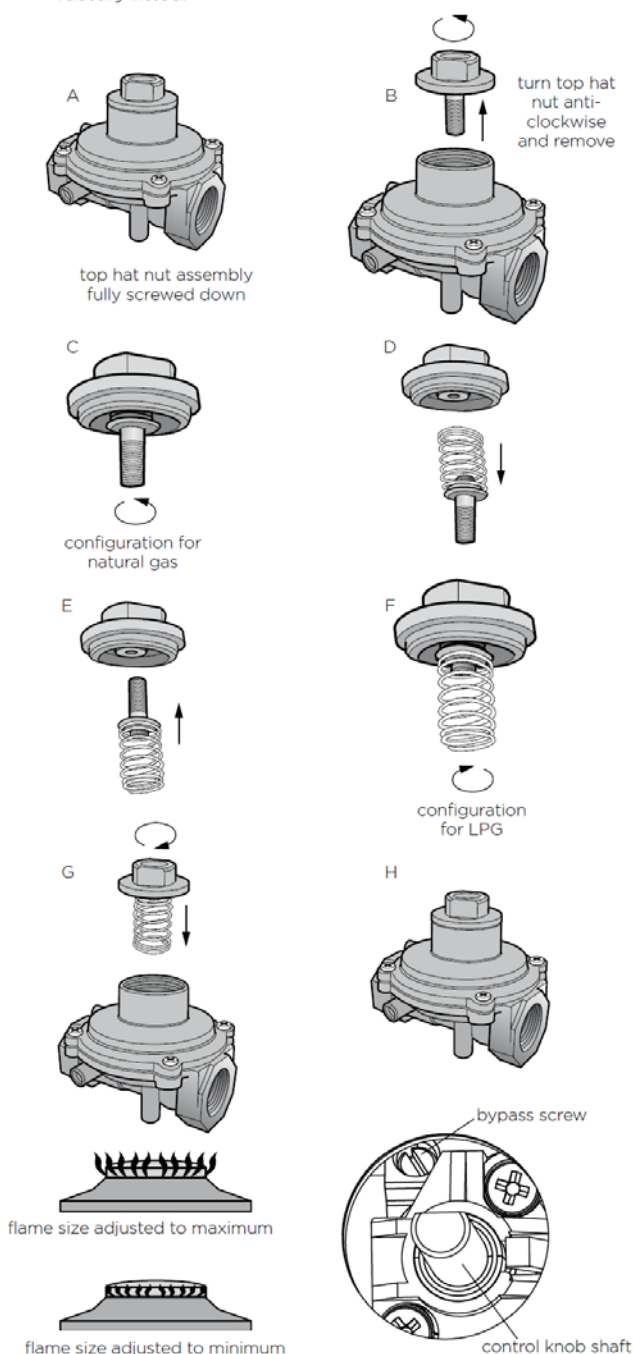
1. Remove the hotplate trivets, burner caps and burner crowns to access the hotplate injectors. Replace the factory fitted injectors with the appropriate injectors, as supplied. Refer to injector orifice table for injector sizes. The injector size is stamped on the side of the injector.
2. Unscrew the top hat nut from the regulator. The top hat nut and control pressure spring assembly will disengage as an assembly.
3. Unscrew the threaded pin from top hat.
4. Upright threaded pin, so spring is free and screw pin back into the top hat until firm.
5. Refit the top hat nut assembly to the regulator ensuring that it is fully screwed down. The regulator is now set for connection to LPG.
6. Turn on the gas supply and at each new connection check for leaks using soapy water. Each hotplate valve should be turned on, one at a time, and the injector hole blanked off for several seconds.
7. The operation of the regulator can be confirmed by connecting a manometer to the pressure test point located on the side of the regulator body adjacent to the outlet. With the appliance operating check the outlet pressure:
 - when all burners of the appliance are operating at maximum,
 - when the smallest burner of the appliance is operating at minimum.

Under these conditions the outlet pressure should not vary from the nominal outlet pressure of 2.60kPa by more than $\pm 0.52\text{kPa}$.

8. If the regulator appears to not be performing satisfactorily then check the following points:
 - If the outlet pressure is consistently too low then the inlet pressure may be too low and adjustment of an upstream regulator or valve with insufficient flow capacity may be present in the gas supply line.
 - If this is suspected then it may be necessary to repeat the checks whilst measuring both the inlet and outlet pressure to determine if the inlet pressure is in the range 2.75 – 7.00kPa.
 - Check that the insert has been fitted correctly.
 - Check that the turret screw is fully screwed down.
 - Check that the regulator has been fitted to the gas supply line in the correct orientation, the arrow on the base of the body indicates the direction of gas flow.

Once these checks have been completed, if the regulator still fails to perform in a satisfactory manner it should be replaced.

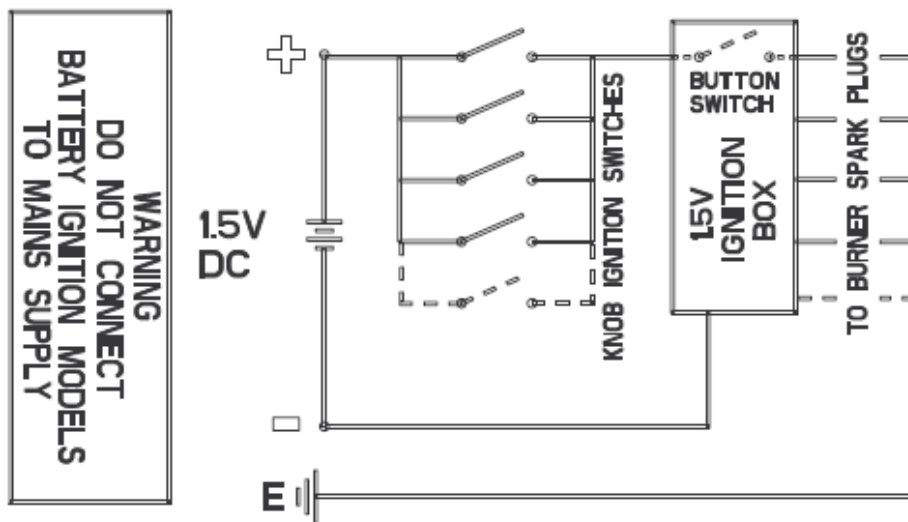
9. One by one, turn the knobs to minimum and screw in the bypass screw (accessible when the knob is removed) until a small stable flame results. Turn the knob to maximum and then back to minimum to ensure that the correct minimum flame is maintained.
10. Attach the LPG sticker to the cooker, near the gas supply inlet. Cover the Natural Gas label that is factory fitted.



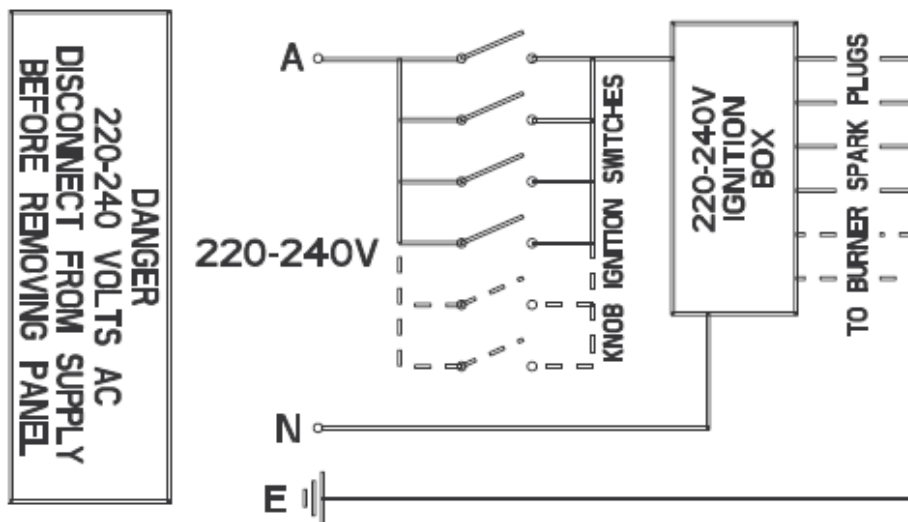
Kit Part N° ES6013		
PT N°	DESCRIPTION	QTY
0131 002 100	NIPPLE INJECTOR LP/NG 1.0 MM	1
0131 002 135	NIPPLE INJECTOR SEMI R NG 1.35 MM	2
0131 002 406	NIPPLE INJECTOR FISH NG 1.45 MM	1
0131 002 393	NIPPLE INJECTOR RAPID NG 1.60 MM	2
0131 002 403	NIPPLE INJECTOR WOK NG 1.75 MM	1
0131 001 148	NIPPLE INJECTOR AUX LP 0.55 MM	1
0131 001 149	NIPPLE INJECTOR SEMI R LP 0.70 MM	2
0131 001 186	NIPPLE INJECTOR RAPID LP 0.90 MM	2
0294 001 032	REGULATOR GAS NG INTEG TEST PT	1
0296 004 103	STICKER GAS TYPE LPG	1
0296 004 100	STICKER GAS TYPE NG	1
ES6012	INSTRUCTION SHEET	1

Burner Type	Natural Gas (Nominal test point pressure: 1.00kPa)	LPG (Nominal test point pressure: 2.60kPa)
Small	1.00	0.55
Medium	1.35	0.70
Fish	1.45	0.78
Large	1.60	0.90
Wok	1.75	1.00

1.5V BATTERY MODELS



220-240V MODELS

**WARNING**

IT IS ILLEGAL FOR PERSONS OTHER THAN LICENSED ELECTRICAL MECHANICS OR PERSONS AUTHORISED BY LEGISLATION TO WORK ON THE FIXED WIRING OF ANY ELECTRICAL INSTALLATION. PENALTIES FOR CONVICTION ARE SEVERE.

IMPORTANT SAFETY NOTICE

This diagram has been prepared for use by electrically qualified service technicians. Electrolux cannot be held responsible for the interpretation of its service publications nor for any injury or damage that may occur in connection with their use.